

# Controllers - Freelance Controllers

## Freelance hardware selector

The Freelance products is a family of rail-mounted modules, consisting of CPUs, communication modules, power supply modules, and various accessories. There are four CPU modules to choose from, ranging from single units with medium processing power and memory to fully redundant units with high processing power.

A CPU module is the central part of the Freelance controller. It provides a high-performance processor for multitasking and executing fast loop cycle times. It comes with three onboard 100 Mbit/s Ethernet network connections and two serial interfaces. A third serial interface is reserved for diagnosis purposes and radio clock connection.

Coupler bus slots and an I/O bus interface enables adding further modules left and right to the CPU modules. An optional front panel display shows the status and diagnostic information directly at the module. Operating modes can be modified by switches on the front panel.

Software version 2016 or higher is mandatory. White housing. Display Unit TD 951F and Battery TA 951F are not included.



Specific feature <sup>1</sup>	PM 783F	PM 901F	PM 902F	PM 904F
<b>General info</b>				
Article number	3BDH000364R0005	3BDH001001R0001	3BDH001000R0001	3BDH001002R0001
Life cycle status	Active			
Redundancy	No	Yes		
Clock Frequency	96 MHz	400 MHz	800 MHz	
Performance, 1000 boolean operations	0.71 ms	0.12 ms		
Memory	10 MB	11 MB	24 MB	48 MB
RAM available for application	2 MB	3 MB	8 MB	16 MB
<b>Dimensions</b>				
Width	67.5 mm	227 mm	285 mm	
Height	76 mm	152 mm		
Depth	54 mm	95 mm		
Weight (including base)	0.4 kg	1.07 kg	1.1 kg	
<b>Environment and certification</b>				
RoHS compliance	Directive 2011/65/EU, (EU) 2015/863			
WEEE compliance	Directive 2012/19/EU			

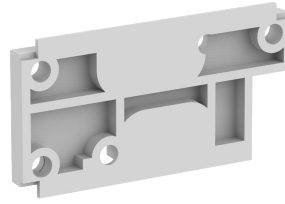
<sup>1</sup> For detailed information on each module, please visit: [freelancehardwareselector.automation.abb.com](https://freelancehardwareselector.automation.abb.com)

# Accessories



Specific feature <sup>1</sup>	TA 724F	TA 924F	TA 951F	TA521
<b>General info</b>				
Article number	3BDH000367R0001	3BDH001031R0001	3BDH001030R0001	1SAP180300R0001
Life cycle status	Active			
<b>Dimensions</b>				
Width	28 mm		17 mm	100 mm
Height	135 mm	152 mm	17 mm	170 mm
Depth	62 mm	85 mm	40 mm	15 mm
Weight	0.12 kg	0.15 kg		
Weight (including base)			0.02 kg	0.009 kg
<b>Environment and certification</b>				
RoHS compliance	Directive 2011/65/EU, (EU) 2015/863			
WEEE compliance	Directive 2012/19/EU			

<sup>1</sup> For detailed information on each module, please visit: [freelancehardwareselector.automation.abb.com](https://freelancehardwareselector.automation.abb.com)



Specific feature <sup>1</sup>	TA525	TA526	TD 951F
<b>General info</b>			
Article number	1SAP180700R0001	1SAP180800R0001	3BDH001020R0001
Life cycle status	Active		
Redundancy	N/A		
Memory	-		
<b>Dimensions</b>			
Width	10 mm	150 mm	58 mm
Height	17 mm	250 mm	110 mm
Depth	1 mm	20 mm	22 mm
Weight (including base)	0.003 kg	0.074 kg	0.09 kg
<b>Environment and certification</b>			
RoHS compliance	Directive 2011/65/EU (EN 50581:2012)		Directive 2011/65/EU, (EU) 2015/863
WEEE compliance	DIRECTIVE/2012/19/EU		Directive 2012/19/EU

<sup>1</sup> For detailed information on each module, please visit: [freelancehardwareselector.automation.abb.com](https://freelancehardwareselector.automation.abb.com)

—  
**[solutions.abb/freelance](https://solutions.abb/freelance)**  
**[solutions.abb/controlsystems](https://solutions.abb/controlsystems)**

—  
We reserve the right to make technical changes to the products or modify the contents of this document without prior notice. With regard to purchase orders, the agreed particulars shall prevail. ABB does not assume any responsibility for any errors or incomplete information in this document.

We reserve all rights to this document and the items and images it contains. The reproduction, disclosure to third parties or the use of the content of this document – including parts thereof – are prohibited without ABB's prior written permission.

Copyright© 2024 ABB All rights reserved